



Hydra Energy Emulsion Gel for Men

A long-term hydrating moisturiser that is non-greasy and quickly absorbed; enriched with Caffeine for energised and brighter skin.

Inside the Formulation

OLIVE SQUALANE

Stable, non-oxidizing hydrocarbon, obtained from the hydrogenation of the olive oil. Olive Squalane improves skin elasticity, suppleness and smoothness by being naturally miscible with the skin sebum; acts as natural moisturizer.

BRONTIDE® BG

Butylene glycol from natural, plant-based sugars using safe and sustainable fermentation-based process technology.

ACTIPHYTE® CUCUMBER GL 100NP

Cucumber extracts have soothing and beautifying properties.

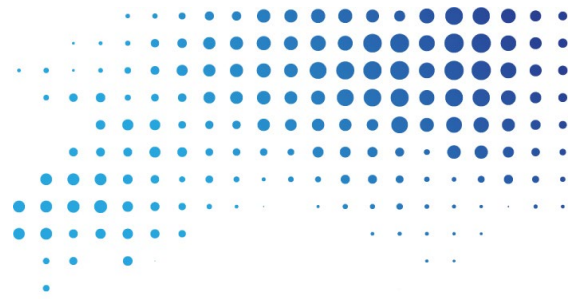
SILICA BEADS SB 700

High porous silica beads offer soft focus effects and applies better spreadability to various formulations by being able to « roll ». The hollow beads allow active ingredients to be safely trapped inside.

CELLUOIL™ MENT

Cellulose based encapsulated Menthol which protect and prevent the loss of volatile aromatic ingredients, improves and prolongs the controlled release of the essential oil.





Formulation reference : Hydra Energy Emulsion Gel

811-1-1

| Phase | Product Name | INCI | %-w/w | Supplier |
|-------|---------------------------------|---|-------|--------------------|
| A | DUB ININ | Isononyl Isononanoate | 3.00 | Stéarinerie Dubois |
| A | Olive Squalane | Squalane | 3.00 | efpbiotek |
| A | WeylCare® ATBS | Ammonium Polyacryloyldimethyl Taurate | 1.00 | Weylchem |
| A | BRB DM 50 | Dimethicone | 1.00 | BRB |
| A | BRB SG 106 | Cyclopentasiloxane; Dimethicone/Vinyl DimethiconeCrosspolymer | 0.50 | BRB |
| B | demin. water | Aqua | 77.00 | |
| B | Paratexin® PE | Phenoxyethanol | 1.00 | Azelis |
| B | Brontide® BG | Butylene Glycol | 4.00 | Genomatica |
| B | Ethanol | Ethanol | 3.00 | |
| B | Actiphyte® Cucumber GL 100NP | Glycerin, Cucumis Sativus (Cucumber) Fruit Extract | 1.00 | Lubrizol |
| B | BLANOVA® Caffeine Anhydrous | Caffeine | 0.75 | Azelis |
| B | BLANOVA® Active D-Panthenol 75% | Panthenol; Aqua | 0.75 | Azelis |
| B | Silica Beads SB 700 | Silica | 2.00 | Miyoshi |
| C | CelluOil™ Ment | Cellulose Acetate Butyrate; Tricaprylin; L-Menthol | 2.00 | Tagra |

Manufacturing Instructions

Add phase A to phase B and homogenize.
 Adjust pH to 7.
 Add phase C to phase AB and mix moderately.

Specification

Flow point [mPa] 12000 (25°C)
 Viscosity@ 1/s [mPas] 40000 (25°C)
 Storage Test @40°C: 3 months; @50°C: 3 months; Thaw- Freeze- cycles (-18°C/+40°C): x

Formulation developed by Azelis Personal Care



**creating value,
growing together**

Disclaimer: Sample formulations are provided for your convenience but Azelis Personal Care does not warrant their merchantability, fitness for use, performance, safety, microbiological profile or freedom from patent infringement. They are not commercial formulations and have not been subjected to extensive testing. It is your responsibility to thoroughly test any formulations before use. All warranties, indemnities or liabilities implied or expressed by law are hereby excluded by Azelis Personal Care to the fullest extent permitted by law.